

BRIMS

CONSTRUCTION


MAY 2025

CARBON REDUCTION PLAN

CARBON REDUCTION PLAN

Commitment to achieving net zero

Brims Construction Limited is committed to achieving net zero emissions by 2050.

Baseline emissions footprint

Baseline emissions are a record of the greenhouse gases that have been produced in the past and were produced prior to the introduction of any strategies to reduce emissions.

Baseline emissions are the reference point against which emissions reduction can be measured.

Baseline year: 2023 - 2024

Additional details relating to the baseline emissions calculations:

We have used historical data from April 2023 - March 2024, following the addition of the Teesside Region to the business, as our baseline to map our carbon reduction plan (CRP). Our baseline emissions are calculated in line with the government guidelines.

Baseline year emissions: 2023 - 2024

Emissions	Total (tCO ₂ e)
Scope 1	69.655
Scope 2	114.412
Scope 3 (including sources)	818.350
Total emissions	1002.417 (tCO₂e)

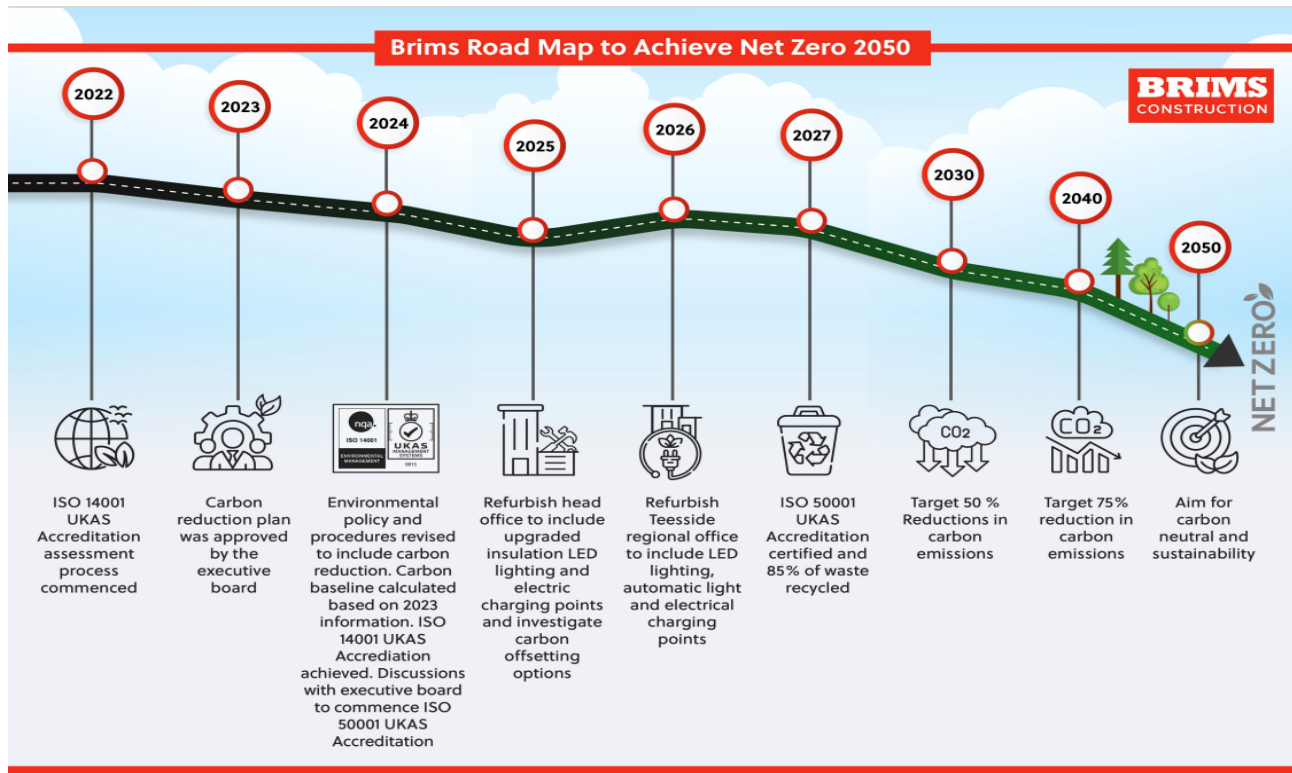
Current emissions reporting

Reporting year: 2024 - 2025

Emissions	TOTAL (tCO ₂ e)
Scope 1	67.854
Scope 2	112.537
Scope 3 (including sources)	739.429
Total emissions	919.820 (tCO₂e)

Emissions reduction targets

In order to continue with our progress to achieving net zero, we have adopted the following carbon reduction targets.



We target that our carbon emissions will decrease over the next five years by 50%, to 551 tCO₂e by 2030.

Carbon reduction Initiatives

The following environmental management initiatives are currently being implemented, from the 2023 - 2024 baseline. The carbon emission reduction achieved by these schemes equate to 82.598 tCO₂e, an 8.24% reduction against the 2023 - 2024 baseline and the measures will be in effect when performing the contract.

- **Renewable Energy Usage** - Future investment in further renewable energy sources for example, solar panels, electric vehicle charging points.
- **Transportation Strategies** - Brims Construction encourage employees to use public transport (if available), vehicle sharing, transition from petrol and diesel vehicles to hybrid and electrical and encourage cycle to work schemes.
- **Supply Chain Information** - Brims Construction negotiate with suppliers to reduce emissions throughout the supply chain. By employing local suppliers, specialist contractors, suppliers with proven environmental policies and practices whenever possible. Brims Construction will at every opportunity seek to influence designs to ensure best environmental practice is considered at all times by client and designers.
- **Waste Reduction & Recycling** - Brims Construction segregate waste on site in separate waste skips whenever possible. This is detailed in Section 5, page 6 of the Brims Environmental and Carbon Policy and Section 8.0 of the Procedures Manual.
- **Carbon Offsetting** - Brims Construction do invest in carbon offsetting projects to compensate for unavoidable carbon emissions by supporting reforestation renewable energy, methane capture initiatives, etc.

- **Employee Engagement** - Brims Construction continue to educate employed / agency personnel, specialist contractor personnel, supply chain personnel and client's / designer's and involve all concerned in carbon reduction training / company initiatives etc. A dedicated environmental / carbon lead is appointed on each Brims controlled project. Also, each Brims-controlled project receives at least one in-house environmental inspection, complete with a full report for the project. Brims induction sessions include information relating to carbon reduction.

Carbon Reduction Projects

- a. Currently we are carrying out a refurbishment of our head office which will include upgraded insulation, LED lighting and electric vehicle charging points, which will be completed later this year.
- b. Tree planting projects this year will total 416 trees, which absorb approximately 9,152 kilograms (or 9.15 metric tonnes) of carbon dioxide (CO₂) per future year,

Declaration and sign off

This Carbon Reduction Plan has been completed in accordance with PPN 06/21 and associated guidance and reporting standard for Carbon Reduction Plans.

Emissions have been reported and recorded in accordance with the published reporting standard for Carbon Reduction Plans and the GHG Reporting Protocol corporate standard and uses the appropriate government emission conversion factors for greenhouse gas company reporting.

Scope 1 and Scope 2 emissions have been reported in accordance with SECR requirements (where required), and the required subset of Scope 3 emissions have been reported in accordance with the published reporting standard for Carbon Reduction Plans and the Corporate Value Chain (Scope 3) Standard.

This Carbon Reduction Plan has been reviewed and signed off by the board of directors (or equivalent management body).



Date of last review: 01/05/2025

Date of next review: 01/05/2026



BRIMS

CONSTRUCTION

**Head Office Sunderland
General Construction**

3 Austin Boulevard
Quay West Business Park
Sunderland, Tyne & Wear
SR5 2AL

T: 0191 516 3290

**Teesside Regional Office
General Construction / Civil Engineering**

Cleveland House
Dukes Court, Teesside Industrial Estate
Thornaby, Stockton-on-Tees
TS17 9LR

T: 01642 308 005



www.brimskonstruction.com